

1 Med.-Up Swinging Afro Afro-Centric

Joe Henderson

$\text{♩} = 217$ (trp. & ten.) **A**

Db MA 7(\#11)

Cm 11

(trp. & ten.)

(trp. ten.) λ

(Bb MI 11)
 Db MA 7(\#11)

Ab MA 7(\#11)

(unis.)

Ab MA 7(\#11)

Gb MA 7(\#11)

horn fill -----

FMI⁷ G^bMA⁷(#11) FMI⁷ G^bMA⁷(#11) GMI⁷(b5) CMA⁷(#11)

B (Solos)

DbMA⁷(#11) CM¹¹ (B^bMI¹¹) DbMA⁷(#11) A^bMA⁷(#11) G^bMA⁷(#11)

FMI⁷ G^bMA⁷(#11) FMI⁷ G^bMA⁷(#11) GMI⁷(b5) CMA⁷(#11)

After solos, D.C. al Coda

DbMA⁷(#11)

Vamp, fill & fade

Piano L.H. may double much of bass line an octave lower than written for first 16 bars of A.
 Head is played twice before & after solos.
 Chords in parentheses are optional.

Afro-Centric

Joe Henderson

Med.-Up Swinging Afro

♩ = 217 (trp. & ten.) **A** E^bMA^{7(#11)}

After solos, D.C. al Coda

Vamp, fill & fade

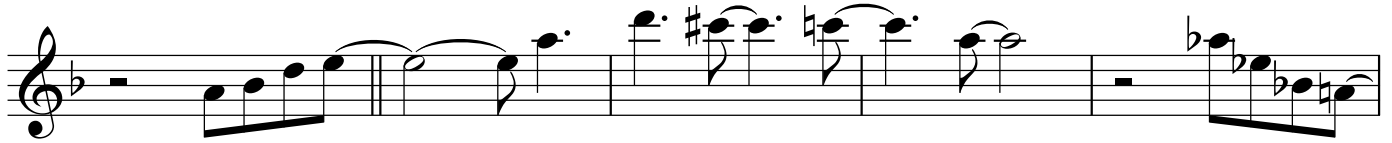
Head is played twice before & after solos. Chords in parentheses are optional.

Afro Centric

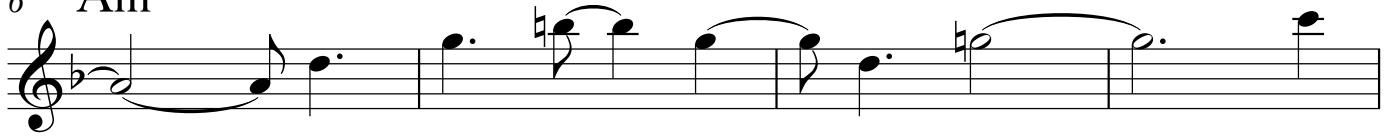
ALTO SAX

Joe Henderson

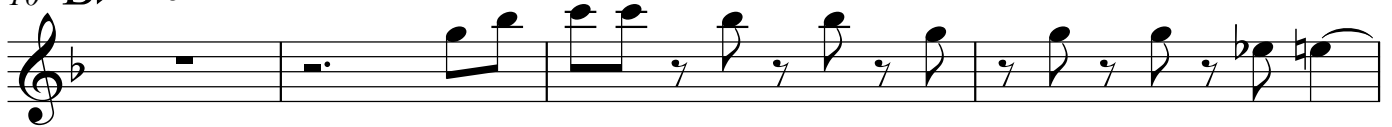
B \flat maj7(#11)



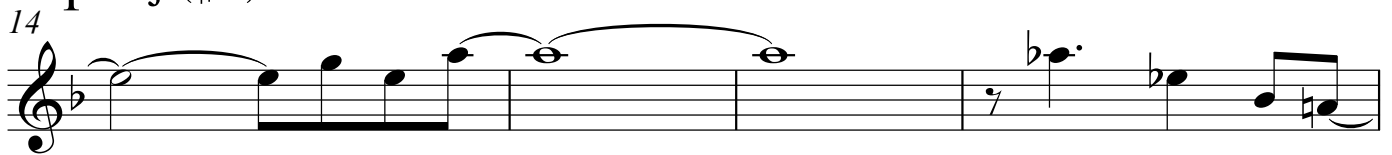
6 Am⁷



10 B \flat maj7(#11)



14 Fmaj7(#11)



18 E \flat maj7(#11)

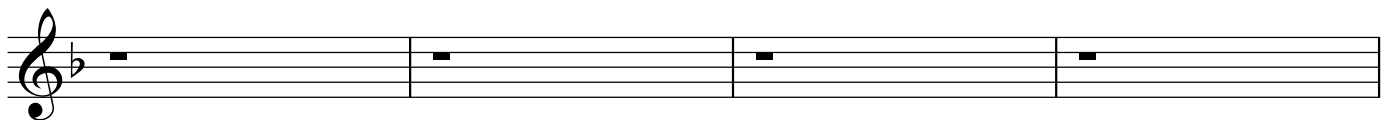


22 Dm⁷

E \flat maj7(#11)

Dm⁷

E \flat maj7(#11)



26 Em^{7(b5)}

Amaj7(#11)

